

C524W

■ Basic Configuration Guide



ubiQuoss

C524W

■ Basic Configuration Guide



UbiQuoss Inc.

24F Millennium B/D, 467-12 Dogok-Dong
Gangnam-Gu, Seoul 135-700 Korea

TEL: +82-70-8666-5000

FAX: +82-2-2190-3201

E-mail: oversea.team@ubiQuoss.com

www.ubiQuoss.com

Preface

This preface provides the overview of C524W basic configuration guide via web, which describes guide conventions, and lists other publications that may be useful.

Introduction

This C524W WEB User guide describes how to configure C524W.

Related Documents

For additional information on this equipment, refer to the following manuals.

Manual	Contents
<i>Installation Guide</i>	Hardware installation Initial operating environment configuration Trouble Shooting
<i>WEB User Guide</i>	Operating configuration for services System operation, administration



Notice

You can download or request the latest documents and information on the products of ubiQuoss Inc. including C524W from the website (<http://www.ubiQuoss.com>).

Description of Symbols

This guide uses the following icons to indicate special messages for the reader.



Note

Presents the useful contents related to the user guide, the references and data related to the product use, etc.

Table of Content

Preface.....	III
Table of Content.....	IV
Overview	1
WEB Login.....	2
Device Info.....	3
Advanced Setup / WAN Service	5
Advanced Setup / Interface Grouping	10
Wireless / Basic	12
Wireless / Security	13
Wireless / Advanced	15
Voice / SIP Basic Setting	16
SIP Proxy Installation, Setting, and Operation	18



ubiQuoss Inc. 24F Millennium Building, 467-12, Dogok-dong, Gangnam-gu, Seoul, 135-700, Korea
tel. +82-70-8666-5140 fax. +82-2-2190-3201 www.ubiquoss.com

Overview

This chapter describes how to create the basic WAN service , Wireless setting, and VoIP.

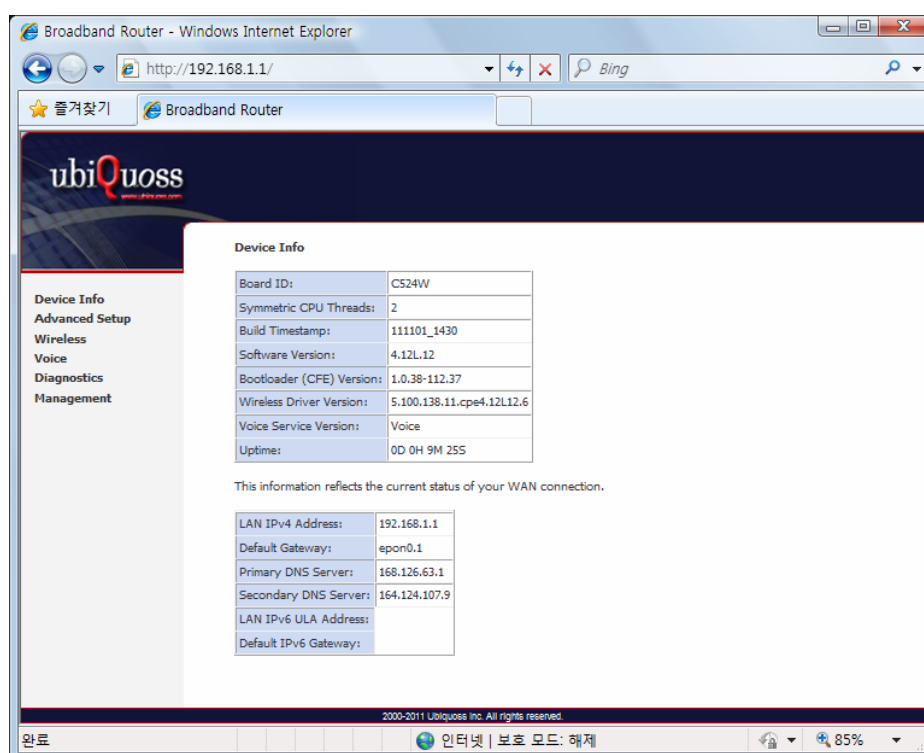
WEB Login

After connecting PC on LAN port, connect <http://192.168.1.1> via WEB Browser.

This system provides 3 accounts as follows:

- Administrator Login: admin / admin
- Operator Login: support/support
- User Login: user / user

When you connect the system via WEB Browser, the following screen will show up.

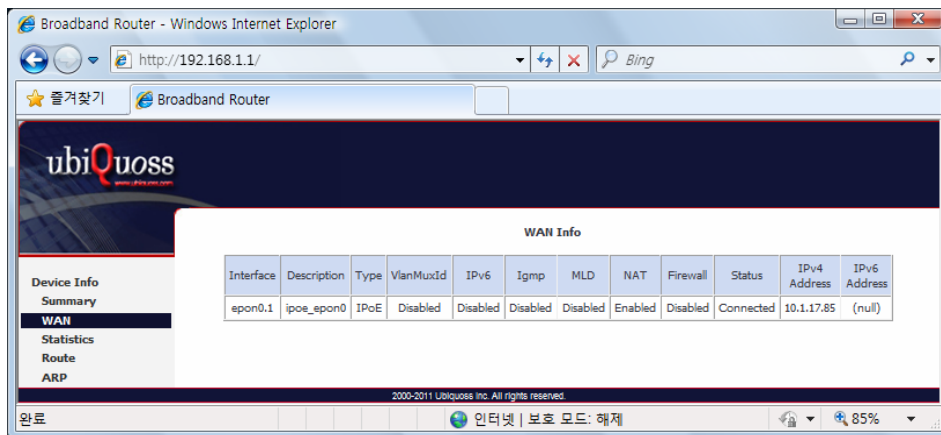


Note If it does not work, after pushing RESET button at the rear of system, then wait one or two minutes and try it again.

Device Info

Device Info shows the basic information about ONT. The information to be able to search is as follows:

- WAN status and IP Information

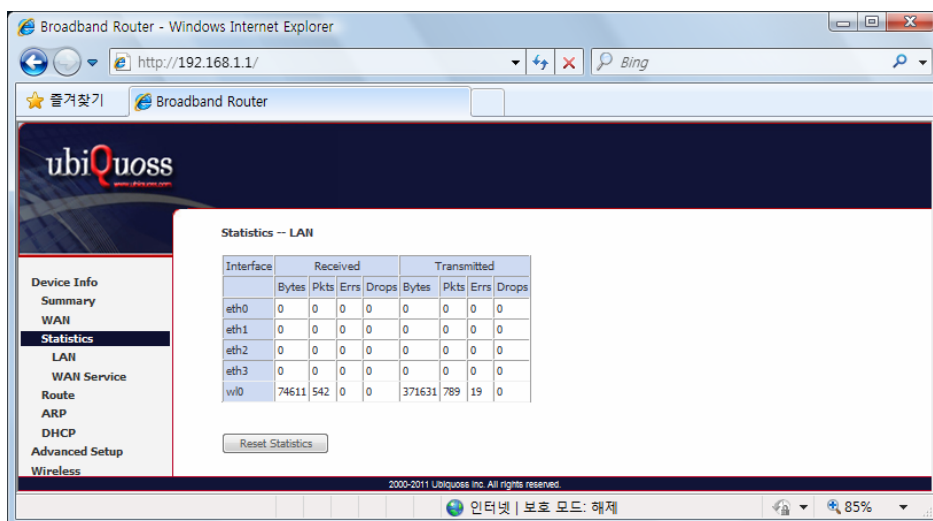


The screenshot shows the 'WAN Info' page of the Broadband Router web interface. The left sidebar contains a menu with 'Device Info', 'Summary', 'WAN', 'Statistics', 'Route', and 'ARP'. The main content area displays a table with WAN information.

Interface	Description	Type	VlanMuxId	IPv6	Igmp	MLD	NAT	Firewall	Status	IPv4 Address	IPv6 Address
epon0.1	ipoe_epon0	IPoE	Disabled	Disabled	Disabled	Disabled	Enabled	Disabled	Connected	10.1.17.85	(null)

At the bottom of the page, there is a footer with the text '2000-2011 Ubiquiti Inc. All rights reserved.' and a status bar showing '인터넷 | 보호 모드: 해제' and '85%'.

- Statistics information about WAN / LAN / WLAN

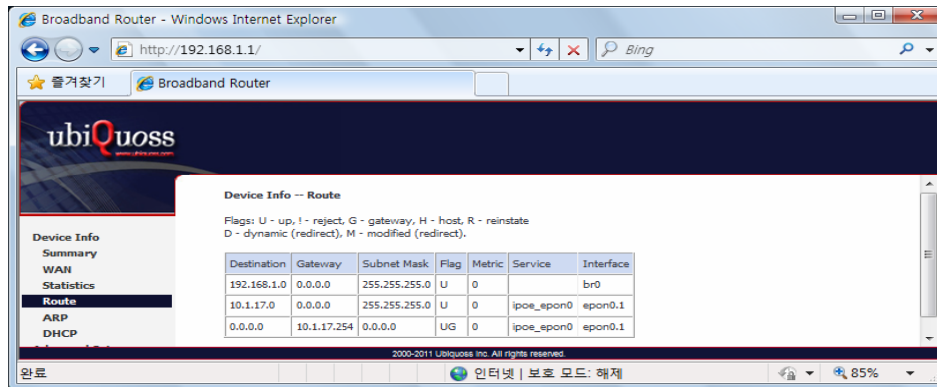


The screenshot shows the 'Statistics -- LAN' page of the Broadband Router web interface. The left sidebar contains a menu with 'Device Info', 'Summary', 'WAN', 'Statistics', 'LAN', 'WAN Service', 'Route', 'ARP', 'DHCP', 'Advanced Setup', and 'Wireless'. The main content area displays a table with LAN statistics.

Interface	Received				Transmitted			
	Bytes	Pkts	Errs	Drops	Bytes	Pkts	Errs	Drops
eth0	0	0	0	0	0	0	0	0
eth1	0	0	0	0	0	0	0	0
eth2	0	0	0	0	0	0	0	0
eth3	0	0	0	0	0	0	0	0
wi0	74611	542	0	0	371631	789	19	0

Below the table, there is a 'Reset Statistics' button. At the bottom of the page, there is a footer with the text '2000-2011 Ubiquiti Inc. All rights reserved.' and a status bar showing '인터넷 | 보호 모드: 해제' and '85%'.

- Route Information



Device Info -- Route

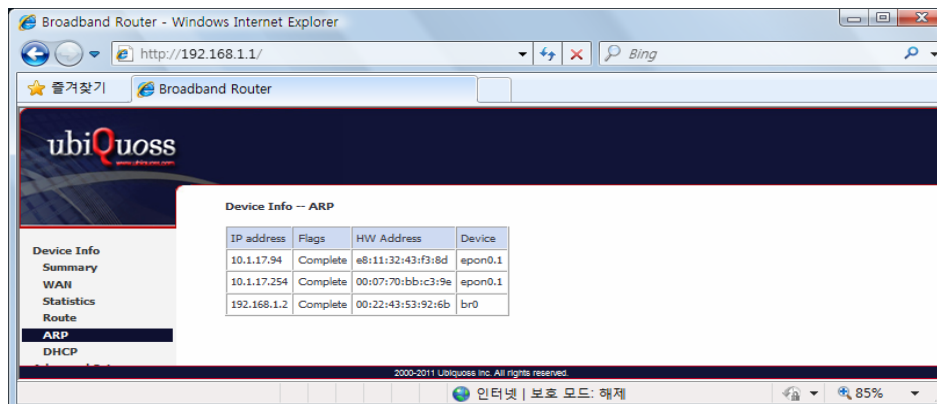
Flags: U - up, I - reject, G - gateway, H - host, R - reinstate
D - dynamic (redirect), M - modified (redirect).

Destination	Gateway	Subnet Mask	Flag	Metric	Service	Interface
192.168.1.0	0.0.0.0	255.255.255.0	U	0		br0
10.1.17.0	0.0.0.0	255.255.255.0	U	0	ipoe_epon0	epon0.1
0.0.0.0	10.1.17.254	0.0.0.0	UG	0	ipoe_epon0	epon0.1

2000-2011 Ubiquoss Inc. All rights reserved.

완료 인터넷 | 보호 모드: 해제 85%

- ARP Information



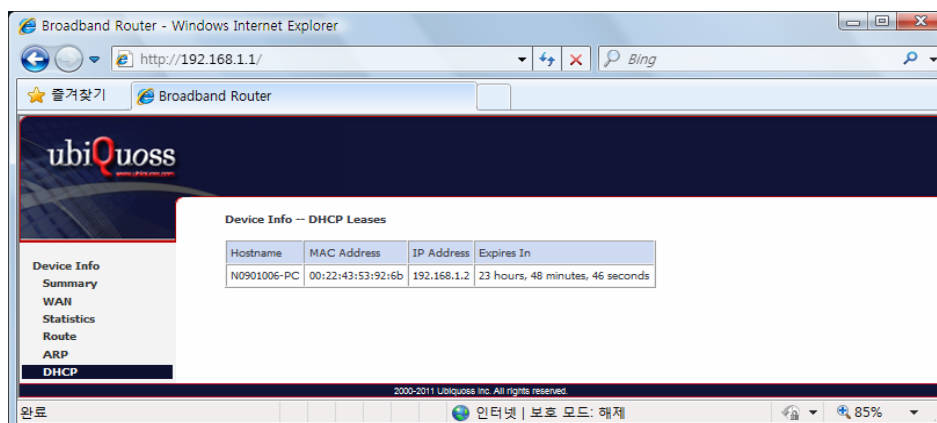
Device Info -- ARP

IP address	Flags	HW Address	Device
10.1.17.94	Complete	e8:11:32:43:f3:8d	epon0.1
10.1.17.254	Complete	00:07:70:bb:c3:9e	epon0.1
192.168.1.2	Complete	00:22:43:53:92:6b	br0

2000-2011 Ubiquoss Inc. All rights reserved.

완료 인터넷 | 보호 모드: 해제 85%

- DHCP Information assigned with LAN / WLAN



Device Info -- DHCP Leases

Hostname	MAC Address	IP Address	Expires In
N0901006-PC	00:22:43:53:92:6b	192.168.1.2	23 hours, 48 minutes, 46 seconds

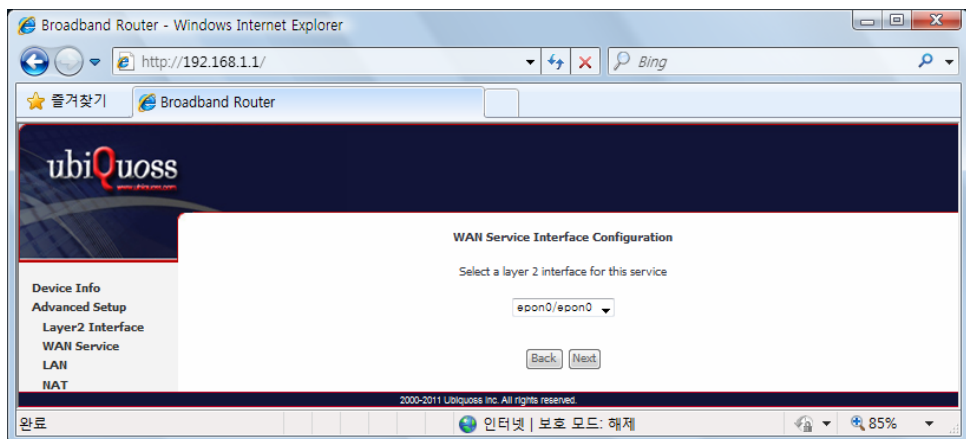
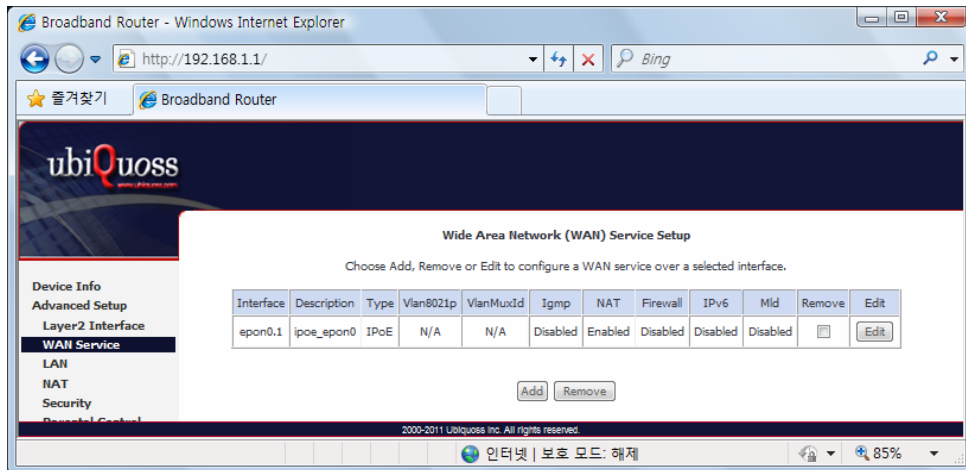
2000-2011 Ubiquoss Inc. All rights reserved.

완료 인터넷 | 보호 모드: 해제 85%

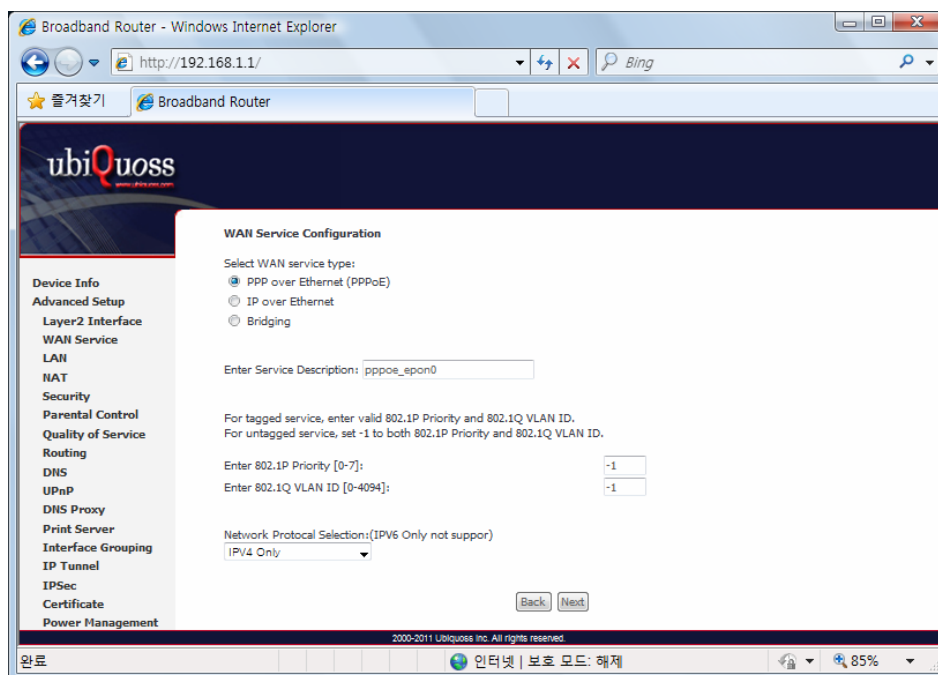
Advanced Setup / WAN Service

You can create the Interface for various WAN service based on the assigned WAN Physical Port.

To create WAN Service Interface, click [Add] button on [WAN Service Setup Display].



If you click [Next] button, you can assign VLAN ID about 802.1Q and a priority about WAN service type and 802.1P.

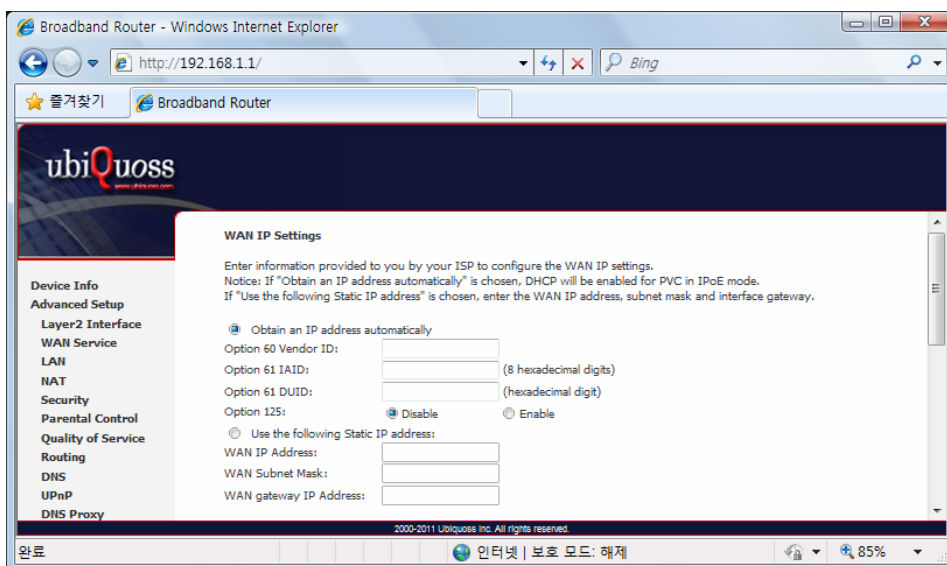


Note

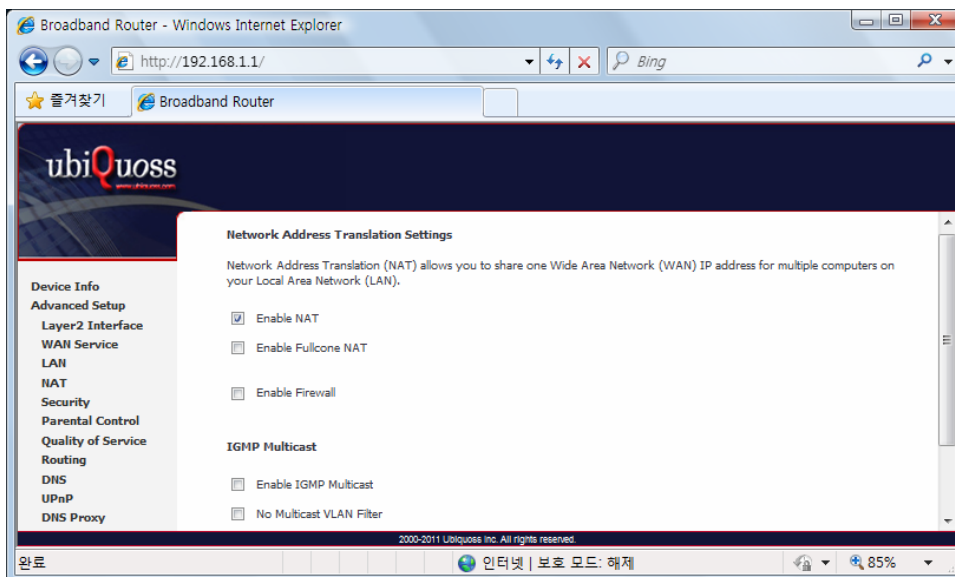
In case assigning as Untagged Service from WAN Service Interface, you must set it as '-1'.

If you click [Next] button, you can set IP about WAN Service Interface. When the system needs to obtain an IP address automatically from DHCP server connected with WAN network, select [Obtain an IP address automatically] radio button.

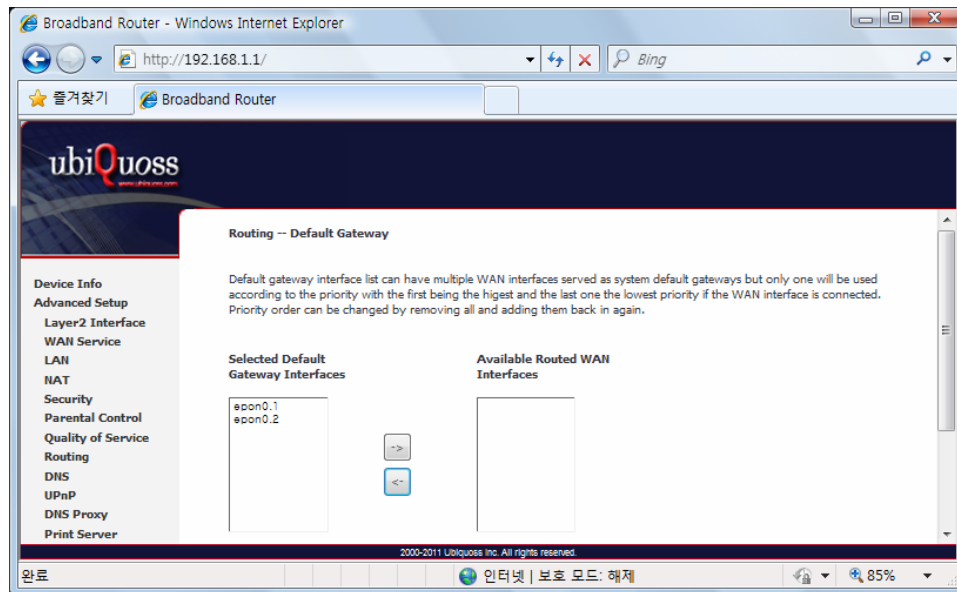
When the system uses the static IP address on WAN Service Interface, select [Use the following Static IP address]. Then set Static IP Address, Subnet Mask and Gateway IP Address.



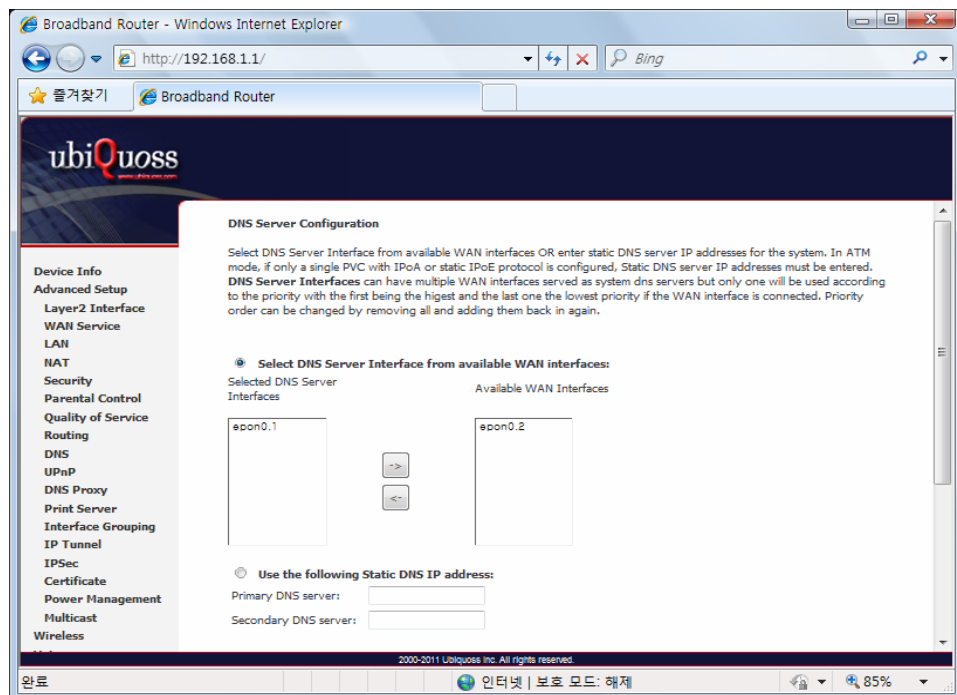
If you click [Next] button, you can enable NAT and Multicast function on the WAN service Interface.



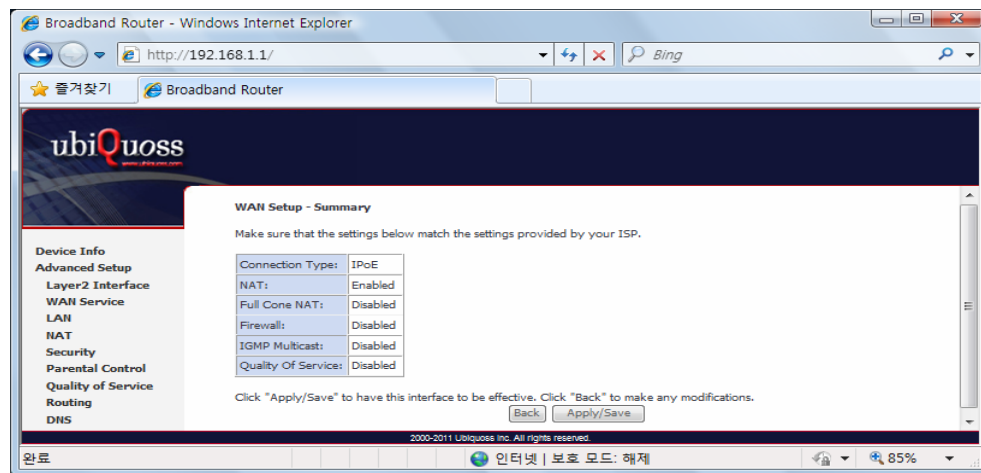
If you click [Next] button, you can assign Default Gateway about WAN Service Interface.



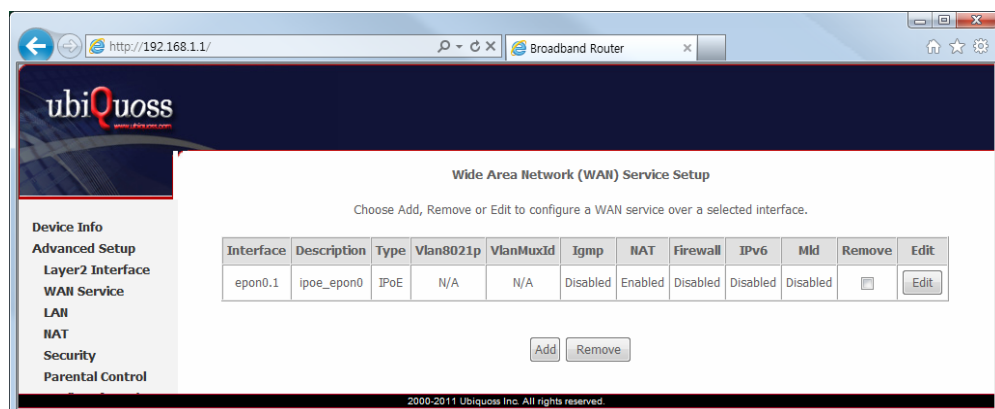
If you click [Next] button, you can set DNS Server about WAN Service Interface.



When the above procedure is done, it shows the information about WAN Service to be applied finally.



When you click [Apply/Save] button, the information of the set WAN Service Interface is listed and it is done about WAN Service Interface.



Note If you change 802.1P, 802.1Q on the created WAN Service Interface, you must register again after deleting WAN Service.



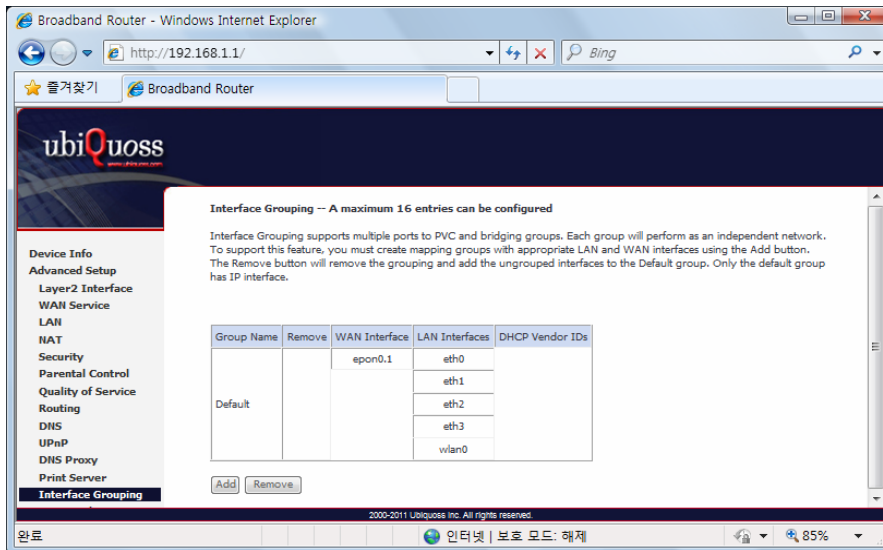
Note In case that you assign 802.1Q VLAN-ID individually on the several WAN Service and do grouping LAN Interfaces, refer to Interface Grouping setting on Advanced Setup Section.

Advanced Setup / Interface Grouping

By creating several groups, you can manage several LAN Interfaces with Interface grouping provided from Advanced setup.

By default, one default group includes all LAN Interfaces.

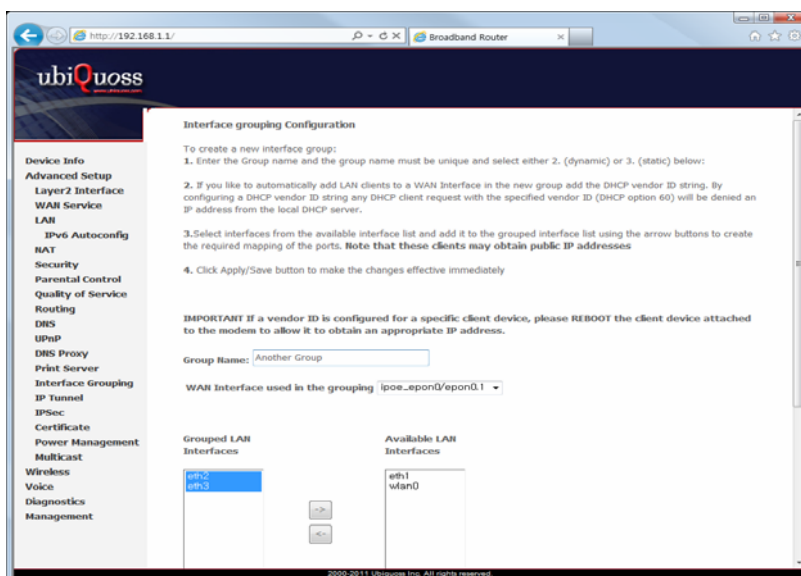
To create Interface Group, click [Add] button on [Interface Group Display]



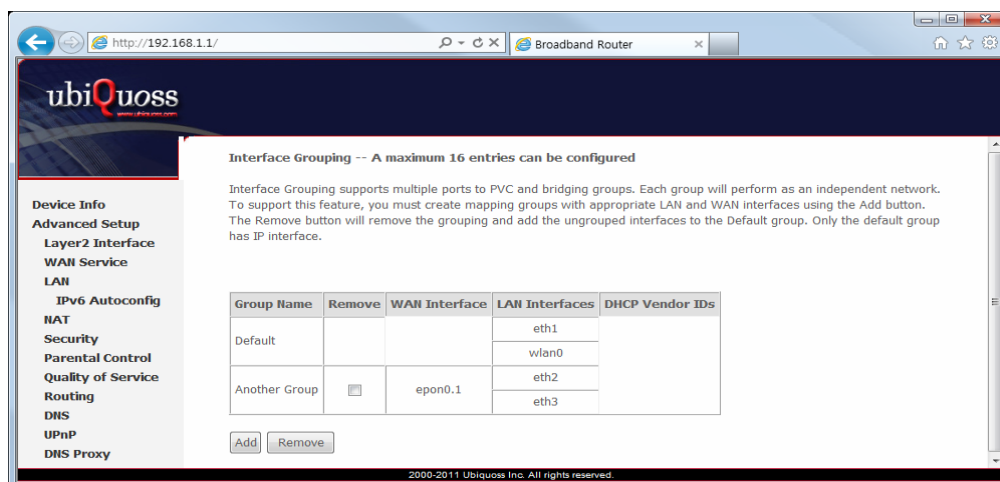
Set Group Name with easy name to acknowledge. To set WAN Interface for using to create Group, select list box. After selecting WAN Interface, select LAN Interface for including to group to create.

Select LAN Interface to move on the [Available LAN Interfaces] BOX.

If you click arrow button, it moves to the [Grouped LAN Interfaces] BOX.



After the creating Group by clicking [Apply/Save] button, the Group is created like following screen.



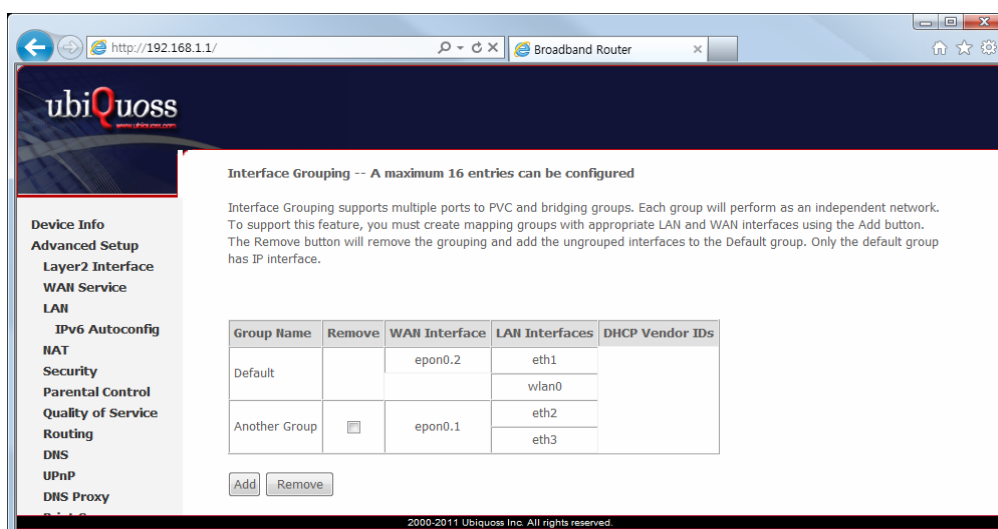
Note

To process incoming traffic after applying VLAN ID per each Group, one WAN interface per Group system is applied. Thus, to set like the following screen, you must add WAN interface before creating Group.



Note

To know the way of adding WAN Interface, refer to [Advanced Setup / WAN Service].



Wireless / Basic

You can set the basic Wireless configuration. It provides 4 Wireless interfaces and you can set each WLAN activation and Scanning activation from network list. It is possible to set SSID and a nation for wireless channel.

Wireless -- Basic

This page allows you to configure basic features of the wireless LAN interface. You can enable or disable the wireless LAN interface, hide the network from active scans, set the wireless network name (also known as SSID) and restrict the channel set based on country requirements. Click "Apply/Save" to configure the basic wireless options.

☒ Enable Wireless
☐ Hide Access Point
☐ Clients Isolation
☐ Disable WMM Advertise
☐ Enable Wireless Multicast Forwarding (WMM)

SSID:
 BSSID: 00:07:70:11:22:35
 Country:
 Max Clients:

Wireless - Guest/Virtual Access Points:

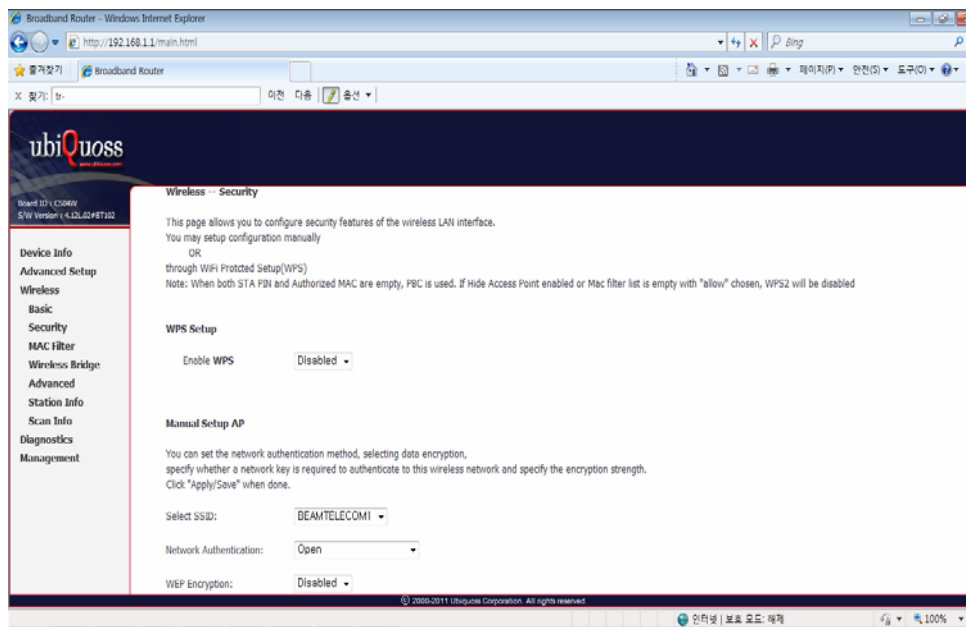
Enabled	SSID	Hidden	Isolate Clients	Disable WMM Advertise	Enable WMM	Max Clients	BSSID
<input type="checkbox"/>	wl0_Guest1	<input type="checkbox"/>	<input type="checkbox"/>	<input type="checkbox"/>	<input type="checkbox"/>	16	N/A
<input type="checkbox"/>	wl0_Guest2	<input type="checkbox"/>	<input type="checkbox"/>	<input type="checkbox"/>	<input type="checkbox"/>	16	N/A
<input type="checkbox"/>	wl0_Guest3	<input type="checkbox"/>	<input type="checkbox"/>	<input type="checkbox"/>	<input type="checkbox"/>	16	N/A

Apply/Save

2000-2011 Ubiquiti Inc. All rights reserved.

Wireless / Security

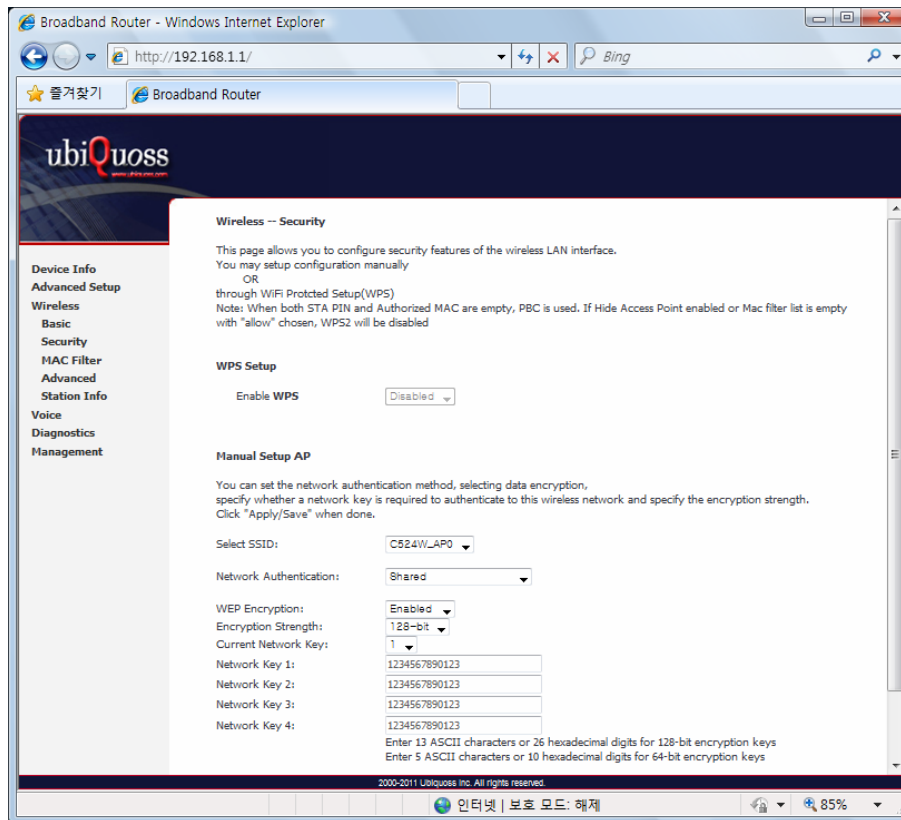
You can set the security of wireless. It is possible to apply the specific network authentication per each SSID. It is also possible to set the key encryption for authentication or not.



Network authentication Way

Authentication way	Description
Open	No Encryption.
Shared	WEP . 64Bit : 5 or 10 numbers security key 128Bit : 13 or 26 security key
802.1X	Uses Radius Server / WEP key
WPA	Radius authentication and WPA / WAPI Encryption (TKIP, AES, TKIP+AES).
WPA-PSK	Pre-shared Key
WPA2	Advanced WPA
WPA2-PSK	WPA / WAPI passphrase Key
Mixed WPA2 /WPA	Mixed WPA and WPA2
Mixed WPA2 / WPA-PSK	Mixed WPA-PSK and WPA2-PSK

To apply “Shared” that is the most basic Network Authentication way, Select “Shared” on the Authentication Select Box.



Note

When you select each Network Authentication way, the screen shows the different setting options.

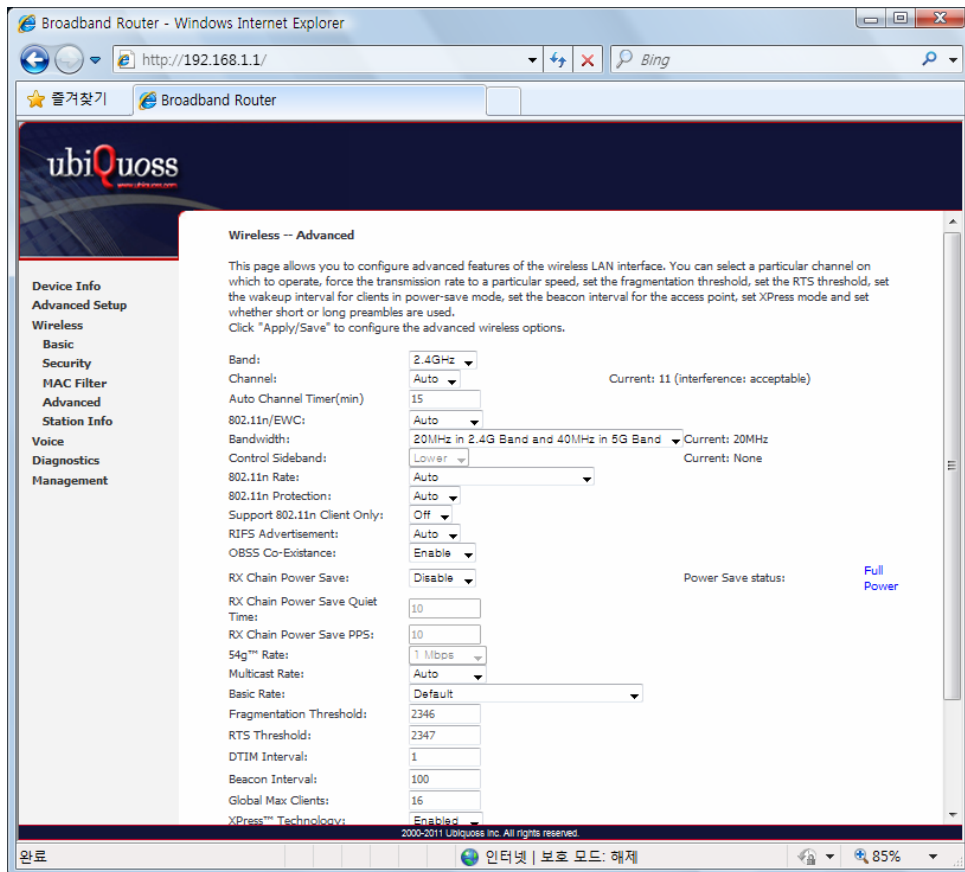


Note

You can select Current Network Key among 1~4. We recommend to change a new Network key value instead of default value.

Wireless / Advanced

It is possible to set the advanced setting about Wireless LAN Interface. You can set the specific channel to want to run. You can set the transmission speed according to bandwidth and Beacon interval for AP.

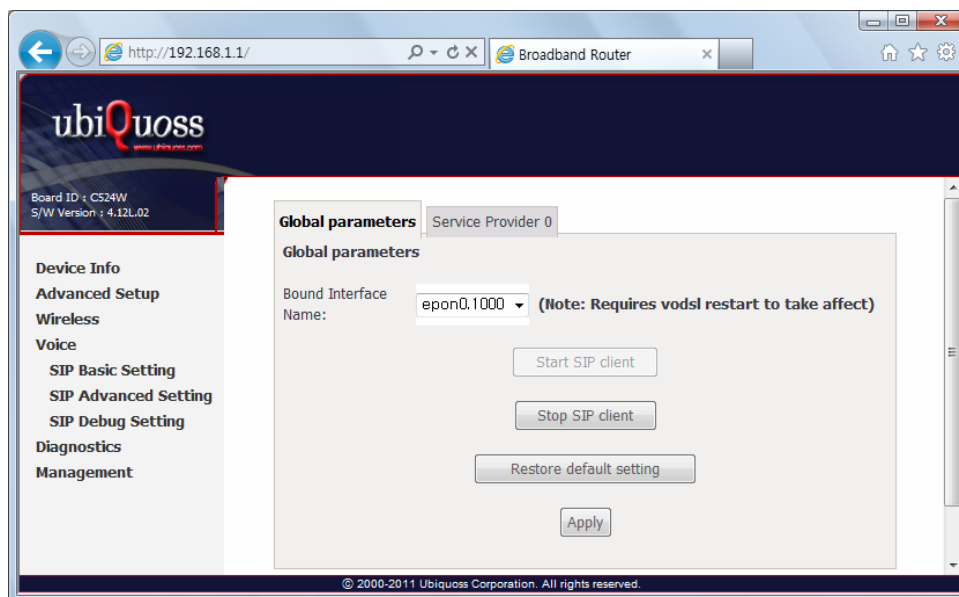


Note You can use only 2.4GHZ Band in this system.

Voice / SIP Basic Setting

You can set the parameter values to link the parameter value for Voice Application running and SIP Proxy.

In case of Global parameter, you set Binding Interface to link with SIP Client. To service SIP, you create WAN interface and bind to the relevant Interface.



Note

After setting WAN Interface, stop SIP Client with clicking [Stop SIP Client] button. To apply the changed value, click [Start SIP Client] button.



Note

To link with SIP Proxy, set WAN Interface to send and receive SIP packet.
Any_WAN setting also does not matter.

To link with SIP, enter the parameters in the Service Provider 0 Tab.

Locale selection

- USA - NORTHAMERICA

SIP Proxy address(IP Address / Hostname) and Port

- Role routing where to send about received SIP message
- Outbound Proxy / Inbound Proxy

SIP Outbound Proxy address(IP Address / Hostname) and Port

- When receiving SIP requesting message from UAC, it translates. In case of need, it reconstructs header value of request message and send to UAS. Outbound Proxy requests Proxy Server address information of UAS to send SIP request message to DNS server.

SIP Registrar address(IP Address / Hostname) and Port

- To improve SIP security, it connects only authenticated UAC by already having Account information at phone connection.

SIP Account Information (Extension, authentication, Codec etc.)



Note After setting parameter value, stop SIP Client with clicking [Stop SIP Client] button. To apply the changed value, click [Start SIP Client] button.

SIP Proxy Installation, Setting, and Operation

The following procedure shows how to install, set, and operate SIP Proxy for testing voip on the Local site.

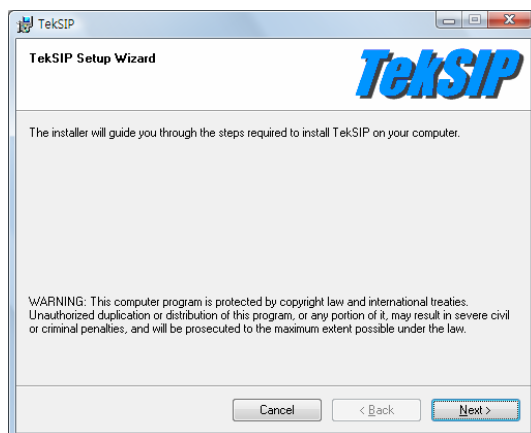
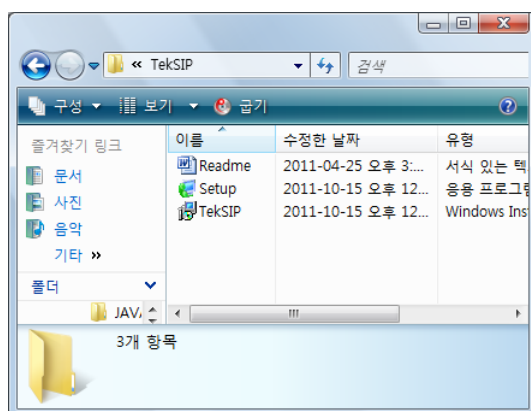
Download 'TekSIP' freeware software from the following link.

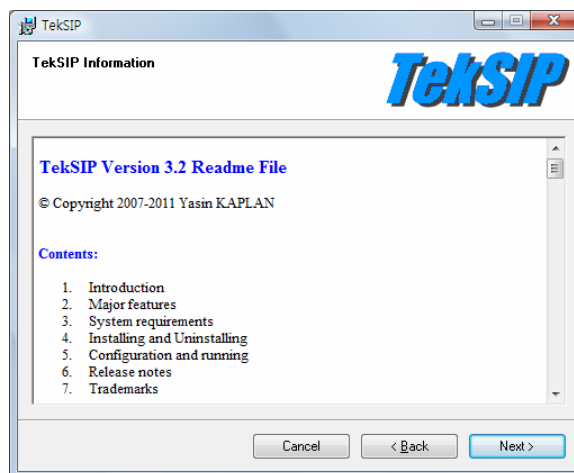
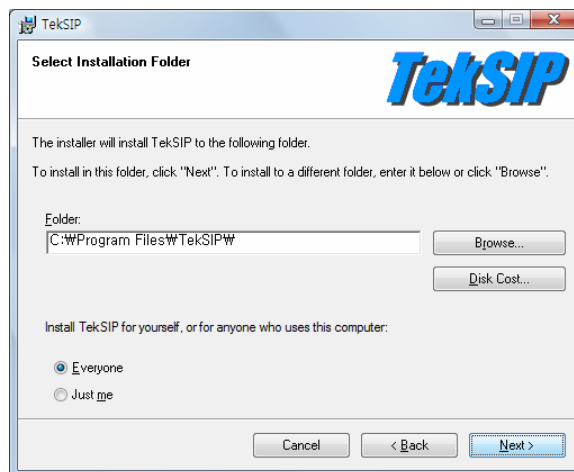
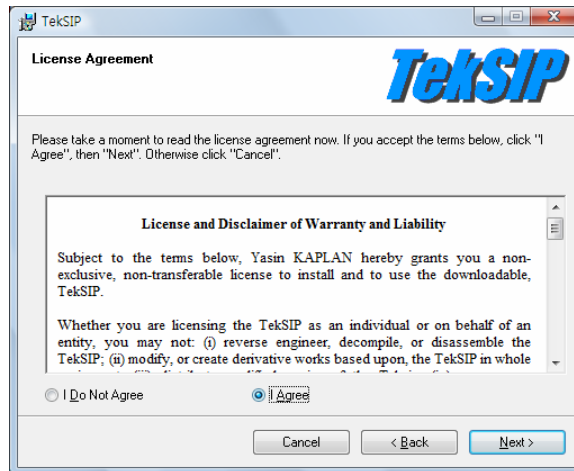
<http://www.brothersoft.com/teksip-download-214021.html>

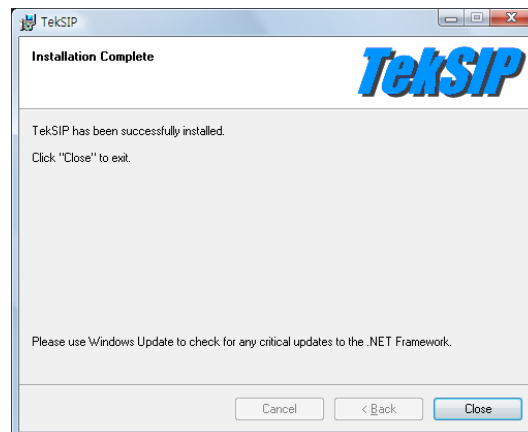
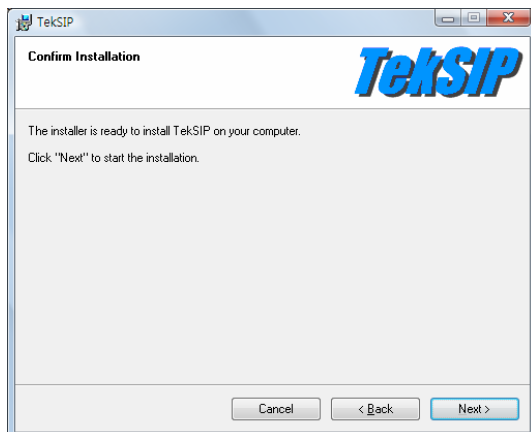


Note

Because 'TekSIP' is a freeware, it can test only 5 phone numbers. If you want to manage it more, you must buy it.



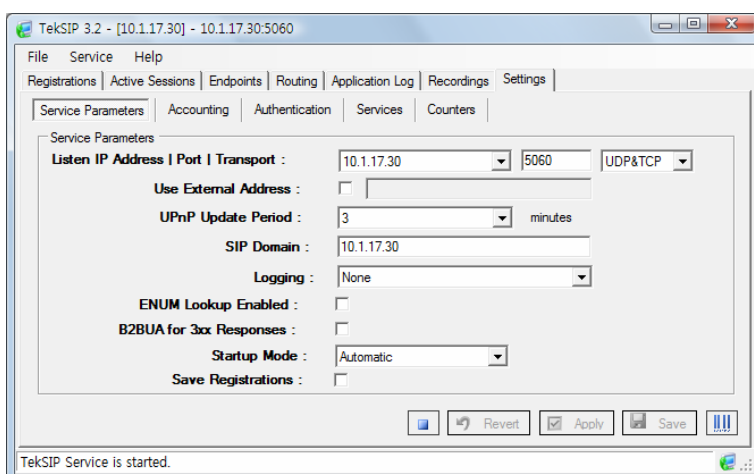




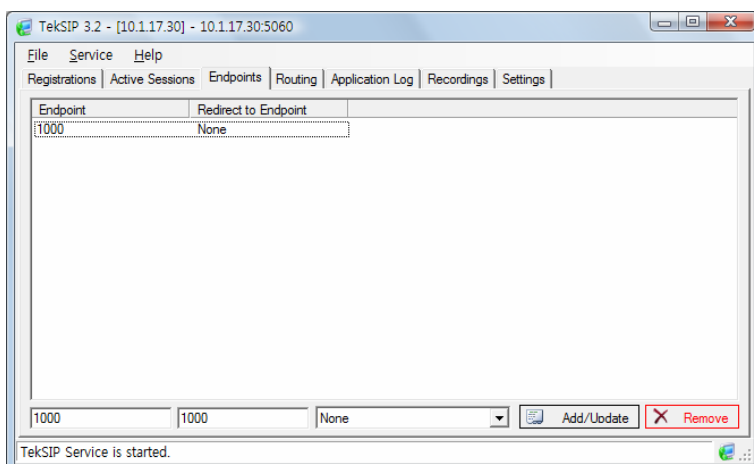
After installation, execute the TekSIP.

Set SIP Proxy IP Address to communicate with UAC.

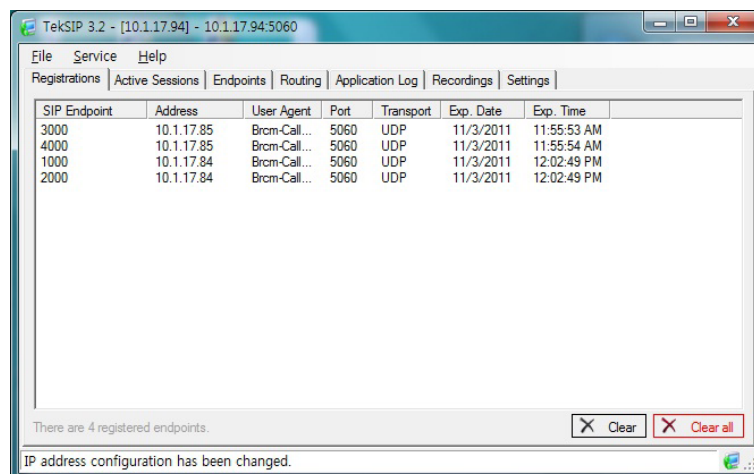
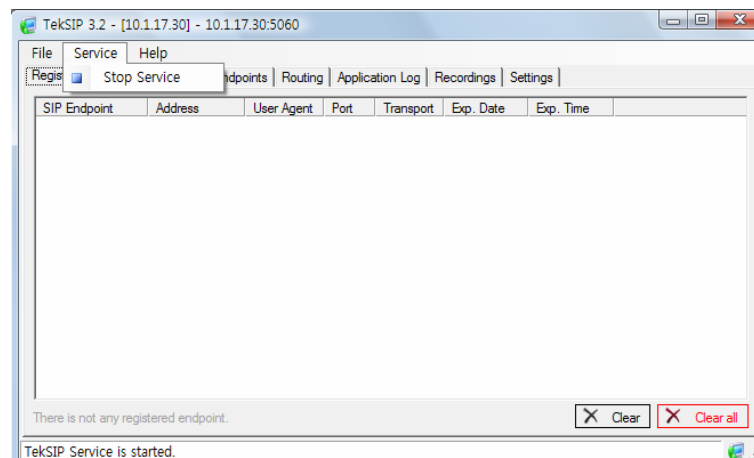
By default, it shows the ethernet LAN card, wireless LAN card, and Loopback IP lists.



Register username and password for the authentication of UAC.



Finally, enable SIP Service.



Note When the registration between SIP Proxy and UAC is done, it displays UAC information.

Check the relevant SIP Packets from your PC installed SIP Proxy.

